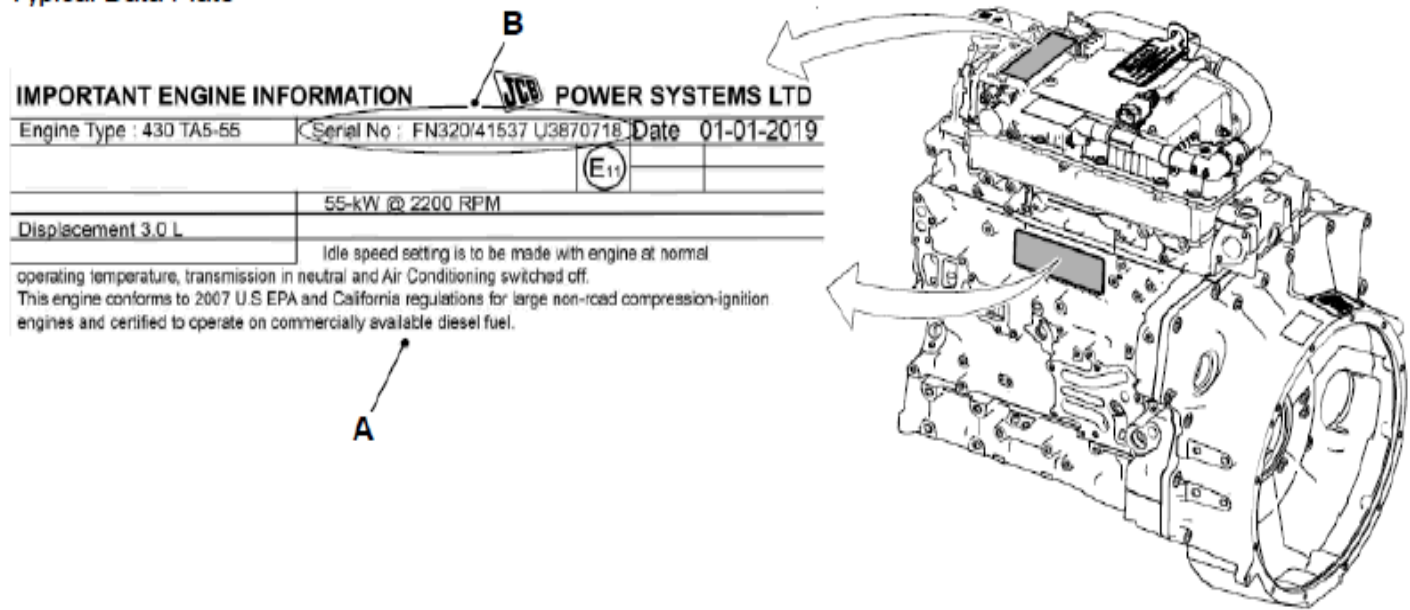


Typical Engine Identification Number

The engine data labels are attached to the cylinder block as shown.

Typical Data Plate



A - Engine data label

B - Engine identification number

The data label includes the engine identification number. The country of manufacturer, engine serial number and year of manufacture of the engine are also stamped on the cylinder block.

Table 1. Example of the engine identification number

	FN	320/40001	U	00001	04
Digit	1-2	3-10	11	12-16	17-18

Table 2.

Digit 1-2	Engine Type
FN	3L turbocharged and aftercooled electronic common rail fuel injection (Stage V) > 55Kw

Table 3. Explanation of the engine identification number

Digit	Explanation
3-10	Engine Part Number
11	Country of Manufacture (U = United Kingdom)
12-16	Engine Serial Number
17-18	Year of Manufacture