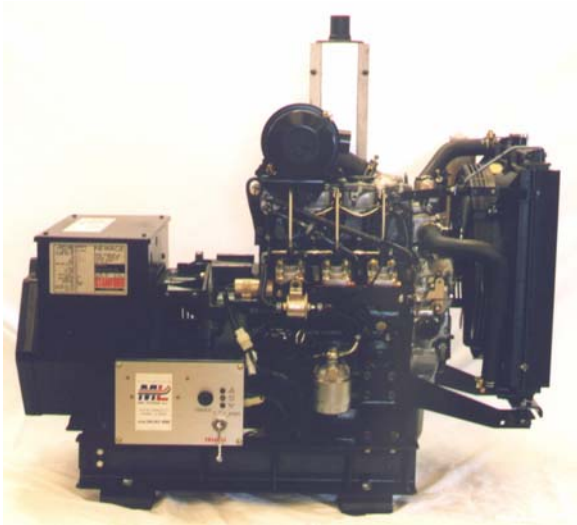




COMMMPAC

6 - 23 KW
ENERGY PAC



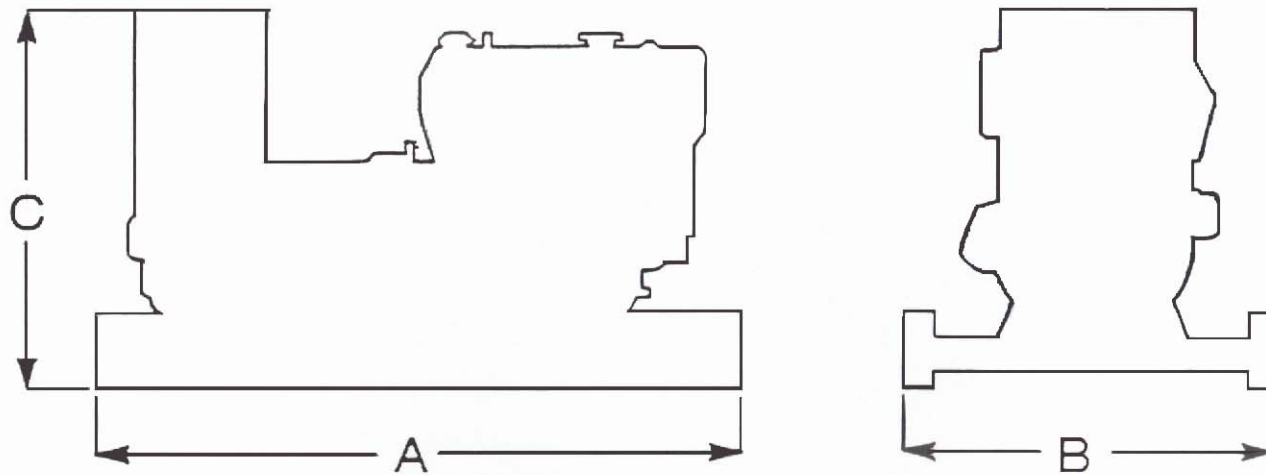
STANDARD EQUIPMENT:

Radiator cooled diesel engine, Brushless AC generator end, Steel skid, Lifting eyes, key start/stop, 12 VDC starter & alternator, rubber isolation mounts, dry type air cleaner, lube oil & fuel filters, fan guard, industrial type muffler, safety shutdown system for low oil pressure & high coolant temperature, owners manual.

OPTIONAL ACCESSORIES:

- A.C. Meter panel with ammeter, voltmeter, frequency meter and phase selector switch.
- Receptacle panel (custom built to customer's requirements).
- Lead acid cranking battery
- Fuel tanks
- Weather protective enclosure
- Sound attenuated enclosure
- Automatic cranking panel & automatic transfer switch
- Racor water/fuel separator

Overall Dimensions



MODEL	ENGINE	RATED OUTPUT KW @ 0.8 PF 60 HZ 1800 RPM	APPROX. FUEL CONS. GAL/HOUR	APPROX. DIMENSIONS			APPROX. WEIGHT POUNDS
				A	B	C	
ML6INRD	3CA1 ISUZU	6.0	0.8	39.8"	20.7"	31"	542
ML8.2INRD	3CB1 ISUZU	8.2	0.9	41"	22.5"	36.6"	592
ML11INRD	3CE1 ISUZU	11	1.4	41	22.5	36.6	592
ML13.5INRD	3CE1 ISUZU	13.5	1.4	42.5	22.5	37.6	592
ML16INRD	4LE1 ISUZU	16	1.7	54.5	21.5	30.1	686
ML23INRD	4LE1 ISUZU	23	1.7	54.5	21.5	30.1	706

ENGINE DESIGN FEATURES:

- ◆ 4 cycle water-cooled inline configuration
- ◆ Radiator cooled by industrial radiator
- ◆ Cast iron construction
- ◆ Overhead valves
- ◆ Replaceable valve guides
- ◆ Fan guard
- ◆ Cold start system
- ◆ 12 volt electrical system

AVAILABLE VOLTAGES:

- 120/240 1 phase - standard
- 120/208 3 phase - optional
- 10 & 12 wire configurations

GENERATOR FEATURES:

- ◆ Single bearing
- ◆ Steel frame
- ◆ SAE adaptations
- ◆ Laminated steel rotor
- ◆ 4 wire stator
- ◆ Terminal strip connections
- ◆ Voltage regulator installed
- ◆ Radio suppression to commercial standards



1212 St. Charles Street
 Houma, LA 70360
 (985) 857-8000 1-800-960-0068
www.mlengine.com
 E-mail: sales@mlengine.com